

CONCESSION

LOT 14

LOT 13

LOT 12

ROAD ALLOWANCE BETWEEN CONCESSIONS 8 AND 9 (MUNICIPALLY KNOWN AS LAWSON ROAD)

DRAFT PLAN OF SUBDIVISION OF
PART OF LOTS 13 AND 14
CONCESSION 7
PART OF LOTS 13 AND 14
CONCESSION 8
TOWNSHIP OF EAST FERRIS
DISTRICT OF NIPISSING
TULLOCH GEOMATICS INC.
SCALE 1 : 2000
2026

METRIC UNITS
DISTANCE SHOWN ON THIS PLAN ARE IN METRES AND CAN BE CONVERTED TO FEET BY DIVIDING BY 0.3048



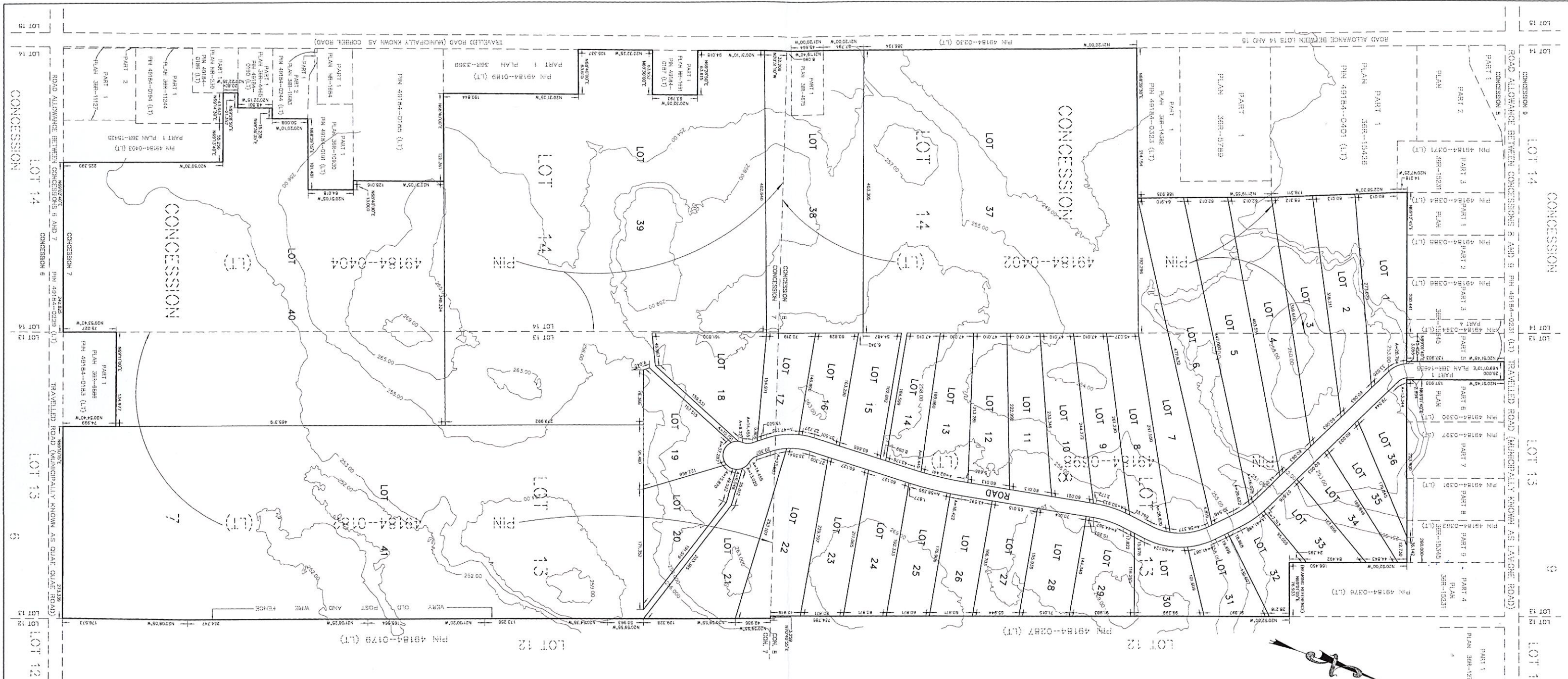
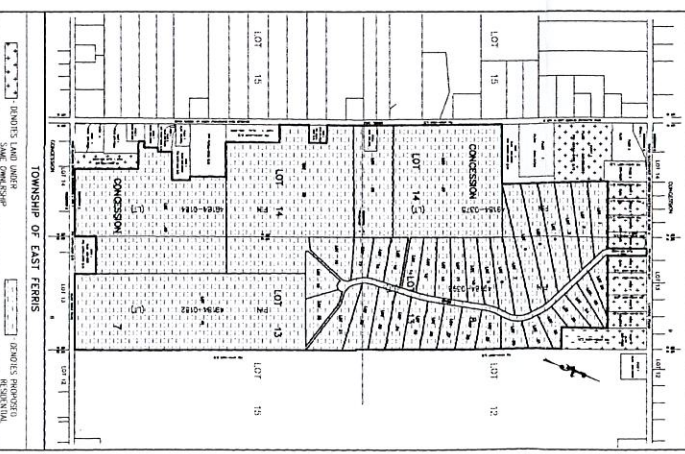
LAND USE ANALYSIS

LOT/ROAD/UNIT	INTENDED USE	No. OF UNITS	AREA (HECTARES)
LOTS 1 TO 41	RESIDENTIAL	41	131.9872
ROAD	ROAD	1	2.2485
TOTAL		41	134.1157

ADDITIONAL INFORMATION REQUIRED UNDER SECTION 51 (17) OF THE ONTARIO PLANNING ACT

- (A) AS CARRIED ON THE FACE OF THE PLAN
- (B) AS SHOWN ON THE FACE OF THE PLAN
- (C) AS SHOWN ON THE FACE OF THE PLAN
- (D) THE PURPOSE FOR WHICH THE LOTS ARE TO BE USED ARE:
- (1) LISTED IN THE LAND USE ANALYSIS;
- (2) NORTH - RESIDENTIAL
- (3) EAST - RESIDENTIAL
- (4) WEST - RESIDENTIAL
- (5) AS SHOWN ON THE FACE OF THE PLAN
- (6) PRIVATE WATER SYSTEM
- (7) AS SHOWN ON THE FACE OF THE PLAN
- (8) THE MUNICIPAL SERVICES TO BE AVAILABLE TO THE LANDS ARE:
- (A) MUNICIPAL SERVICES - POLICE, FIRE, AMBULANCE,
- (B) MUNICIPAL SERVICES - GARBAGE, RECYCLING, ROAD MAINTENANCE,
- (C) MUNICIPAL SERVICES - ELECTRICITY, TELEPHONE, CABLE, INTERNET
- (D) THERE IS NO DAMAGE EXISTING AFFECTING THE PROPERTY.

KEY PLAN
SCALE 1 : 10,000



OWNER'S CERTIFICATE

I HEREBY CONSENT TO THE PLACING OF THIS DRAFT PLAN FOR DRAFT APPROVAL.
NORTH BAY, ONTARIO
Feb 10, 2026
I HAVE THE AUTHORITY TO SIGN THE CORPORATION
1000328150 ONTARIO INC.
49184-0182 (LT) AND 49184-0404 (LT)

SURVEYOR'S CERTIFICATE

I HEREBY CERTIFY THAT THE BOUNDARIES OF THE LAND TO BE SUBDIVIDED AND THEIR RELATIONSHIP TO THE ADJOINING LANDS ARE CORRECTLY SHOWN.
NORTH BAY, ONTARIO
FEBRUARY 24, 2026
R. D. WALTER
REGISTERED SURVEYOR
FOR TULLOCH GEOMATICS INC.

BEARING NOTE

BEARINGS ARE ASTROMONIC AND ARE REFERRED TO THE SOUTH LIMIT OF PART 4 AS SHOWN ON DEPOSITED PLAN 388-15231, HAVING A BEARING OF N89°07'00\"/>



TULLOCH GEOMATICS INC.
621 MAIN STREET WEST
NORTH BAY, ONTARIO
N4B 2V5
northbay@tulloch.co
DRAWN BY: M. MANNINGFIELD
FILE NO. 251527