

METRIC METRIC UNITS
 DISTANCES AND COORDINATES SHOWN ON THIS PLAN ARE IN METRES AND CAN BE CONVERTED TO FEET BY DIVIDING BY 0.3048.

DETAIL 'A'
 NOT TO SCALE

DETAIL 'B'
 NOT TO SCALE

APPROVED under section 51 of the PLANNING ACT.
 This _____ day of _____, 2022

PLAN 36M-

CERTIFICATE OF REGISTRATION
 I CERTIFY THAT THIS PLAN IS REGISTERED IN THE LAND REGISTRY OFFICE FOR THE LAND TITLES DIVISION OF NIPISSING AT _____ O'CLOCK ON THE _____ DAY OF _____, 2022

PAULINE ROCHEFORT
 MAYOR

MONICA HAWKINS
 CLERK

AND ENTERED IN THE PARCEL REGISTER FOR ALL OF PINS 49183-0643 (LT), 49183-0644 (LT), 49183-0674 (LT), PART OF PINS 49183-0591 (LT) 49183-0649 (LT) AND 49183-0671 (LT)

AND REQUIRED CONSENTS ARE REGISTERED AS PLAN DOCUMENT No. _____

REPRESENTATIVE FOR LAND REGISTRAR

LEGEND

- DENOTES FOUND MONUMENT
- DENOTES PLANTED MONUMENT
- IB DENOTES IRON BAR
- SSIB DENOTES STANDARD IRON BAR
- SSIB DENOTES SHORT STANDARD IRON BAR
- RPL DENOTES ROCK PLUG
- RB DENOTES ROCK BAR
- S DENOTES SET
- M DENOTES MEASURED
- MU DENOTES MILLER & URSO SURVEYING INC.
- NEF DENOTES NO EVIDENCE FOUND
- 1018 DENOTES J. J. NEWLANDS, O.L.S.
- WIT DENOTES WITNESS
- 1526 DENOTES A. C. OSBORNE, O.L.S.
- 1104 DENOTES P. A. BLACKBURN LIMITED, O.L.S.
- 789 DENOTES PETER T. CLARKE, O.L.S.
- OU DENOTES ORIGIN UNKNOWN
- 1663 DENOTES PAUL GOODRIDGE, O.L.S.
- NSFM DENOTES NOT SUITABLE FOR MONUMENTATION
- P DENOTES DEPOSITED PLAN 36R-13991
- P1 DENOTES DEPOSITED PLAN 36R-5953
- P2 DENOTES DEPOSITED PLAN 36R-5447
- P3 DENOTES DEPOSITED PLAN 36R-6513
- P4 DENOTES DEPOSITED PLAN 36R-11421
- P5 DENOTES DEPOSITED PLAN 36R-8854
- P6 DENOTES DEPOSITED PLAN 36R-13921
- P7 DENOTES DEPOSITED PLAN NR-1177
- P8 DENOTES DEPOSITED PLAN 36R-14009
- P9 DENOTES DEPOSITED PLAN 36R-9024
- P10 DENOTES DEPOSITED PLAN 36R-8178
- P11 DENOTES DEPOSITED PLAN 36R-6340
- FD DENOTES FOUND
- FD DENOTES NOT TO SCALE

THIS PLAN COMPRISES ALL OF PINS 49183-0643 (LT), 49183-0644 (LT), 49183-0674 (LT) AND PART OF PINS 49183-0591 (LT) 49183-0649 (LT), 49183-0671 (LT)

LOTS 1, 2 AND 3- SUBJECT TO EASEMENT No.'s LT90710 AND LT111370

PLAN OF SUBDIVISION OF PART OF LOTS 11 AND 12 AND PART OF BROKEN LOTS 13 AND 14 CONCESSION 15 TOWNSHIP OF EAST FERRIS DISTRICT OF NIPISSING

SCALE 1 : 2000

Miller & Urso Surveying Inc.

OWNER'S CERTIFICATE

THIS IS TO CERTIFY THAT:

- LOTS 1 TO 13 INCLUSIVE, BLOCKS 14, 15, 16, 17, 18, 19 AND 20 AND PART OF THE STREET NAMED ONE MILE ROAD HAVE BEEN LAID OUT IN ACCORDANCE WITH MY INSTRUCTIONS.
- ONE MILE ROAD IS HEREBY DEDICATED TO THE CORPORATION OF THE TOWNSHIP OF EAST FERRIS AS A PUBLIC HIGHWAY.

1851477 ONTARIO INC.

DATE _____ MARCEL DEGAGNE (PRESIDENT)
 I HAVE THE AUTHORITY TO BIND THE CORPORATION REGISTERED OWNER OF PINS 49183-0671 (LT), 49183-0649 (LT), 49183-0591 (LT), 49183-0674 (LT), 49183-0643 (LT), 49183-0644 (LT)

SURVEYOR'S CERTIFICATE

I CERTIFY THAT :

- THIS SURVEY AND PLAN ARE CORRECT AND IN ACCORDANCE WITH THE SURVEYS ACT, THE SURVEYORS ACT, THE LAND TITLES ACT AND THE REGULATIONS MADE UNDER THEM.
- THE SURVEY WAS COMPLETED ON THE 12TH DAY OF MAY 2022.

SEPTEMBER 9th, 2022

DATE _____ R. D. MILLER
 ONTARIO LAND SURVEYOR FOR: MILLER & URSO SURVEYING INC. ONTARIO LAND SURVEYORS

THIS PLAN OF SURVEY RELATES TO AOLS PLAN SUBMISSION FORM NUMBER V-34231.

BEARING NOTE

BEARINGS ARE ASTRONOMIC AND ARE REFERRED TO THE WEST LIMIT OF PART 1 AS SHOWN ON DEPOSITED PLAN 36R-13991, HAVING A BEARING OF N20°49'30"W.

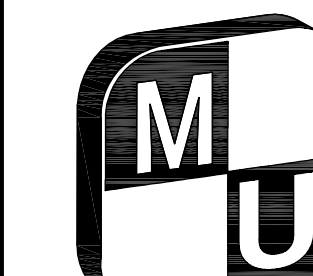
OBSERVED REFERENCE POINTS (ORP) DERIVED FROM RTK GPS OBSERVATIONS USING THE CAN-NET NETWORK, UTM ZONE 17, NAD 83 (CSRS) (2010) COORDINATES TO URBAN ACCURACY PER SEC. 14 (2) OF 0.REG.216/10

POINT ID	NORTHING	EASTING
ORP 'A'	5129021.12	630213.29
ORP 'B'	5128624.75	630259.42

COORDINATES CANNOT, IN THEMSELVES, BE USED TO RE-ESTABLISH CORNERS OR BOUNDARIES SHOWN ON THIS PLAN.

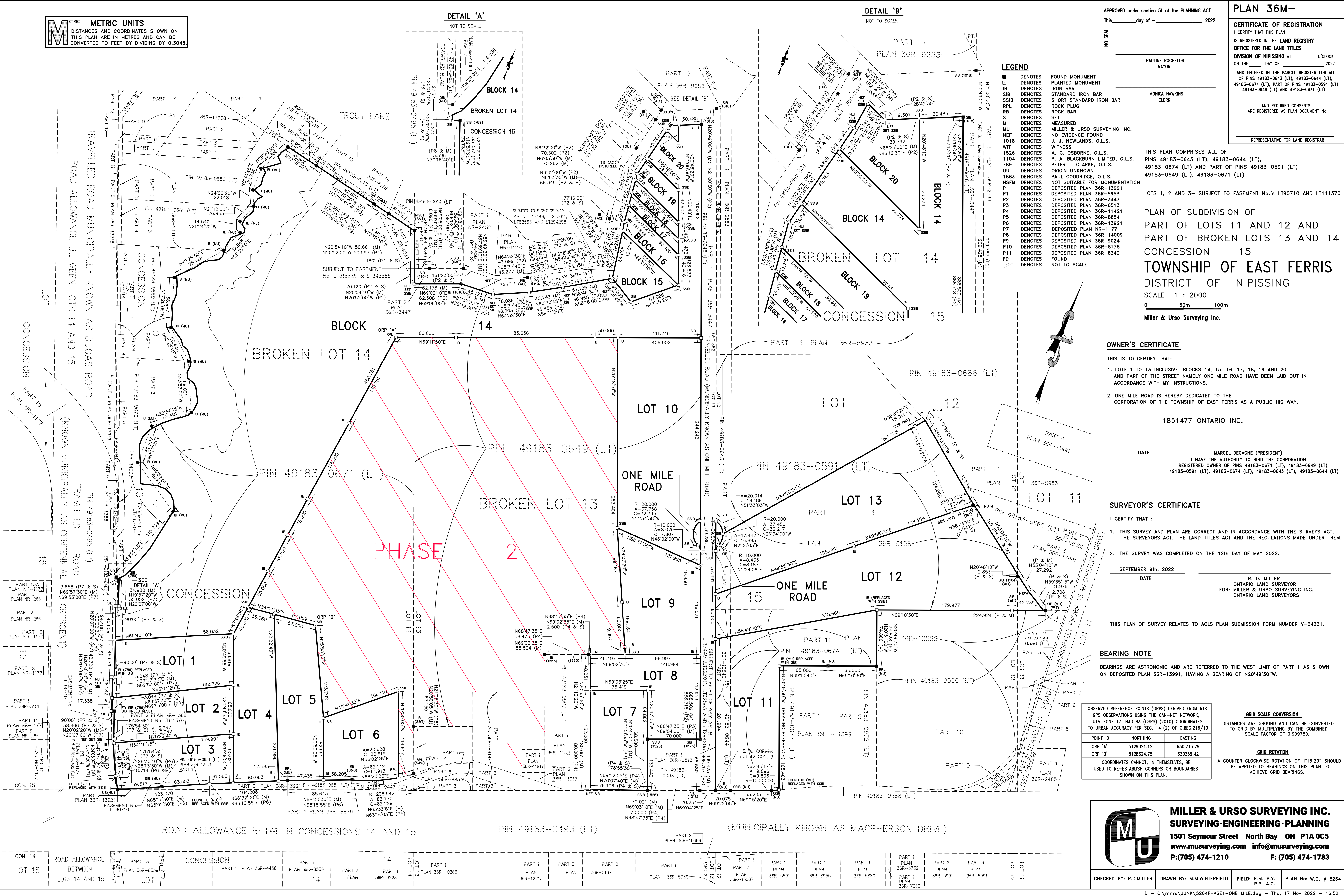
GRID SCALE CONVERSION
 DISTANCES ARE GROUND AND CAN BE CONVERTED TO GRID BY MULTIPLYING BY THE COMBINED SCALE FACTOR OF 0.999780.

GRID ROTATION
 A COUNTER CLOCKWISE ROTATION OF 1'13"20" SHOULD BE APPLIED TO BEARINGS ON THIS PLAN TO ACHIEVE GRID BEARINGS.



MILLER & URSO SURVEYING INC.
 SURVEYING · ENGINEERING · PLANNING
 1501 Seymour Street North Bay ON P1A 0C5
 www.musurveying.com info@musurveying.com
 P:(705) 474-1210 F: (705) 474-1783

CHECKED BY: R.D.MILLER DRAWN BY: M.M.WINTERFIELD FIELD: K.M. B.Y. P.P. A.C. PLAN No: W.O. # 5264



CON. 15	CON. 14	LOT 15	LOT 14	LOT 13	LOT 12	LOT 11
ROAD ALLOWANCE BETWEEN LOTS 14 AND 15	ROAD ALLOWANCE BETWEEN CONCESSIONS 14 AND 15	CONCESSION 15	CONCESSION 14	LOT 15	LOT 14	LOT 13
PLAN 36R-1177	PLAN 36R-1177	PLAN 36R-1177	PLAN 36R-1177	PLAN 36R-1177	PLAN 36R-1177	PLAN 36R-1177
PART 3	PART 3	PART 3	PART 3	PART 3	PART 3	PART 3
PLAN 36R-8539	PLAN 36R-8539	PLAN 36R-8539	PLAN 36R-8539	PLAN 36R-8539	PLAN 36R-8539	PLAN 36R-8539
LOT	LOT	LOT	LOT	LOT	LOT	LOT
LOT 1	LOT 1	LOT 1	LOT 1	LOT 1	LOT 1	LOT 1
PLAN 36R-1177	PLAN 36R-1177	PLAN 36R-1177	PLAN 36R-1177	PLAN 36R-1177	PLAN 36R-1177	PLAN 36R-1177
PART 1	PART 1	PART 1	PART 1	PART 1	PART 1	PART 1
PLAN 36R-13991	PLAN 36R-13991	PLAN 36R-13991	PLAN 36R-13991	PLAN 36R-13991	PLAN 36R-13991	PLAN 36R-13991
LOT 1	LOT 1	LOT 1	LOT 1	LOT 1	LOT 1	LOT 1
PLAN 36R-1177	PLAN 36R-1177	PLAN 36R-1177	PLAN 36R-1177	PLAN 36R-1177	PLAN 36R-1177	PLAN 36R-1177
PART 1	PART 1	PART 1	PART 1	PART 1	PART 1	PART 1
PLAN 36R-13991	PLAN 36R-13991	PLAN 36R-13991	PLAN 36R-13991	PLAN 36R-13991	PLAN 36R-13991	PLAN 36R-13991
LOT 1	LOT 1	LOT 1	LOT 1	LOT 1	LOT 1	LOT 1
PLAN 36R-1177	PLAN 36R-1177	PLAN 36R-1177	PLAN 36R-1177	PLAN 36R-1177	PLAN 36R-1177	PLAN 36R-1177
PART 1	PART 1	PART 1	PART 1	PART 1	PART 1	PART 1
PLAN 36R-13991	PLAN 36R-13991	PLAN 36R-13991	PLAN 36R-13991	PLAN 36R-13991	PLAN 36R-13991	PLAN 36R-13991
LOT 1	LOT 1	LOT 1	LOT 1	LOT 1	LOT 1	LOT 1
PLAN 36R-1177	PLAN 36R-1177	PLAN 36R-1177	PLAN 36R-1177	PLAN 36R-1177	PLAN 36R-1177	PLAN 36R-1177
PART 1	PART 1	PART 1	PART 1	PART 1	PART 1	PART 1
PLAN 36R-13991	PLAN 36R-13991	PLAN 36R-13991	PLAN 36R-13991	PLAN 36R-13991	PLAN 36R-13991	PLAN 36R-13991
LOT 1	LOT 1	LOT 1	LOT 1	LOT 1	LOT 1	LOT 1
PLAN 36R-1177	PLAN 36R-1177	PLAN 36R-1177	PLAN 36R-1177	PLAN 36R-1177	PLAN 36R-1177	PLAN 36R-1177
PART 1	PART 1	PART 1	PART 1	PART 1	PART 1	PART 1
PLAN 36R-13991	PLAN 36R-13991	PLAN 36R-13991	PLAN 36R-13991	PLAN 36R-13991	PLAN 36R-13991	PLAN 36R-13991
LOT 1	LOT 1	LOT 1	LOT 1	LOT 1	LOT 1	LOT 1
PLAN 36R-1177	PLAN 36R-1177	PLAN 36R-1177	PLAN 36R-1177	PLAN 36R-1177	PLAN 36R-1177	PLAN 36R-1177
PART 1	PART 1	PART 1	PART 1	PART 1	PART 1	PART 1
PLAN 36R-13991	PLAN 36R-13991	PLAN 36R-13991	PLAN 36R-13991	PLAN 36R-13991	PLAN 36R-13991	PLAN 36R-13991
LOT 1	LOT 1	LOT 1	LOT 1	LOT 1	LOT 1	LOT 1
PLAN 36R-1177	PLAN 36R-1177	PLAN 36R-1177	PLAN 36R-1177	PLAN 36R-1177	PLAN 36R-1177	PLAN 36R-1177
PART 1	PART 1	PART 1	PART 1	PART 1	PART 1	PART 1
PLAN 36R-13991	PLAN 36R-13991	PLAN 36R-13991	PLAN 36R-13991	PLAN 36R-13991	PLAN 36R-13991	PLAN 36R-13991
LOT 1	LOT 1	LOT 1	LOT 1	LOT 1	LOT 1	LOT 1
PLAN 36R-1177	PLAN 36R-1177	PLAN 36R-1177	PLAN 36R-1177	PLAN 36R-1177	PLAN 36R-1177	PLAN 36R-1177
PART 1	PART 1	PART 1	PART 1	PART 1	PART 1	PART 1
PLAN 36R-13991	PLAN 36R-13991	PLAN 36R-13991	PLAN 36R-13991	PLAN 36R-13991	PLAN 36R-13991	PLAN 36R-13991
LOT 1	LOT 1	LOT 1	LOT 1	LOT 1	LOT 1	LOT 1
PLAN 36R-1177	PLAN 36R-1177	PLAN 36R-1177	PLAN 36R-1177	PLAN 36R-1177	PLAN 36R-1177	PLAN 36R-1177
PART 1	PART 1	PART 1	PART 1	PART 1	PART 1	PART 1
PLAN 36R-13991	PLAN 36R-13991	PLAN 36R-13991	PLAN 36R-13991	PLAN 36R-13991	PLAN 36R-13991	PLAN 36R-13991
LOT 1	LOT 1	LOT 1	LOT 1	LOT 1	LOT 1	LOT 1
PLAN 36R-1177	PLAN 36R-1177	PLAN 36R-1177	PLAN 36R-1177	PLAN 36R-1177	PLAN 36R-1177	PLAN 36R-1177
PART 1	PART 1	PART 1	PART 1	PART 1	PART 1	PART 1
PLAN 36R-13991	PLAN 36R-13991	PLAN 36R-13991	PLAN 36R-13991	PLAN 36R-13991	PLAN 36R-13991	PLAN 36R-13991
LOT 1	LOT 1	LOT 1	LOT 1	LOT 1	LOT 1	LOT 1
PLAN 36R-1177	PLAN 36R-1177	PLAN 36R-1177	PLAN 36R-1177	PLAN 36R-1177	PLAN 36R-1177	PLAN 36R-1177
PART 1	PART 1	PART 1	PART 1	PART 1	PART 1	PART 1
PLAN 36R-13991	PLAN 36R-13991	PLAN 36R-13991	PLAN 36R-13991	PLAN 36R-13991	PLAN 36R-13991	PLAN 36R-13991
LOT 1	LOT 1	LOT 1	LOT 1	LOT 1	LOT 1	LOT 1
PLAN 36R-1177	PLAN 36R-1177	PLAN 36R-1177	PLAN 36R-1177	PLAN 36R-1177	PLAN 36R-1177	PLAN 36R-1177
PART 1	PART 1	PART 1	PART 1	PART 1	PART 1	PART 1
PLAN 36R-13991	PLAN 36R-13991	PLAN 36R-13991	PLAN 36R-13991	PLAN 36R-13991	PLAN 36R-13991	PLAN 36R-13991
LOT 1	LOT 1	LOT 1	LOT 1	LOT 1	LOT 1	LOT 1
PLAN 36R-1177	PLAN 36R-1177	PLAN 36R-1177	PLAN 36R-1177	PLAN 36R-1177	PLAN 36R-1177	PLAN 36R-1177
PART 1	PART 1	PART 1	PART 1	PART 1	PART 1	PART 1
PLAN 36R-13991	PLAN 36R-13991	PLAN 36R-13991	PLAN 36R-13991	PLAN 36R-13991	PLAN 36R-13991	PLAN 36R-13991
LOT 1	LOT 1	LOT 1	LOT 1	LOT 1	LOT 1	LOT 1
PLAN 36R-1177	PLAN 36R-1177	PLAN 36R-1177	PLAN 36R-1177	PLAN 36R-1177	PLAN 36R-1177	PLAN 36R-1177
PART 1	PART 1	PART 1	PART 1	PART 1	PART 1	PART 1
PLAN 36R-13991	PLAN 36R-13991	PLAN 36R-13991	PLAN 36R-13991	PLAN 36R-13991	PLAN 36R-13991	PLAN 36R-13991
LOT 1	LOT 1	LOT 1	LOT 1	LOT 1	LOT 1	LOT 1
PLAN 36R-1177	PLAN 36R-1177	PLAN 36R-1177	PLAN 36R-1177	PLAN 36R-1177	PLAN 36R-1177	PLAN 36R-1177
PART 1	PART 1	PART 1	PART 1	PART 1	PART 1	PART 1
PLAN 36R-13991	PLAN 36R-13991	PLAN 36R-13991	PLAN 36R-13991	PLAN 36R-13991	PLAN 36R-13991	PLAN 36R-13991
LOT 1	LOT 1	LOT 1	LOT 1	LOT 1	LOT 1	LOT 1
PLAN 36R-1177	PLAN 36R-1177	PLAN 36R-1177	PLAN 36R-1177	PLAN 36R-1177	PLAN 36R-1177	PLAN 36R-1177
PART 1	PART 1	PART 1	PART 1	PART 1	PART 1	PART 1
PLAN 36R-13991	PLAN 36R-13991	PLAN 36R-13991	PLAN 36R-13991	PLAN 36R-13991	PLAN 36R-13991	PLAN 36R-13991
LOT 1	LOT 1	LOT 1	LOT 1	LOT 1	LOT 1	LOT 1
PLAN 36R-1177	PLAN 36R-1177	PLAN 36R-1177	PLAN 36R-1177	PLAN 36R-1177	PLAN 36R-1177	PLAN 36R-1177
PART 1	PART 1	PART 1	PART 1	PART 1	PART 1	PART 1
PLAN 36R-13991	PLAN 36R-13991	PLAN 36R-13991	PLAN 36R-13991	PLAN 36R-13991	PLAN 36R-13991	PLAN 36R-13991
LOT 1	LOT 1	LOT 1	LOT 1	LOT 1	LOT 1	LOT 1
PLAN 36R-1177	PLAN 36R-1177	PLAN 36R-1177	PLAN 36R-1177	PLAN 36R-1177	PLAN 36R-1177	PLAN 36R-1177
PART 1	PART 1	PART 1	PART 1	PART 1	PART 1	PART 1
PLAN 36R-13991	PLAN 36R-13991	PLAN 36R-13991	PLAN 36R-13991	PLAN 36R-13991	PLAN 36R-13991	PLAN 36R-13991
LOT 1	LOT 1	LOT 1	LOT 1	LOT 1	LOT 1	LOT 1
PLAN 36R-1177	PLAN 36R-1177	PLAN 36R-1177	PLAN 36R-1177	PLAN 36R-1177	PLAN 36R-1177	PLAN 36R-1177
PART 1	PART 1	PART 1	PART 1	PART 1	PART 1	PART 1
PLAN 36R-13991	PLAN 36R-13991	PLAN 36R-13991	PLAN 36R-13991	PLAN 36R-13991	PLAN 36R-13991	PLAN 36R-13991
LOT 1	LOT 1	LOT 1	LOT 1	LOT 1	LOT 1	LOT 1
PLAN 36R-1177	PLAN 36R-1177	PLAN 36R-1177	PLAN 36R-1177	PLAN 36R-1177	PLAN 36R-1177	PLAN 36R-1177
PART 1	PART 1	PART 1	PART 1	PART 1	PART 1	PART 1
PLAN 36R-13991	PLAN 36R-13991	PLAN 36R-13991	PLAN 36R-13991	PLAN 36R-13991	PLAN 36R-13991	PLAN 36R-13991
LOT 1	LOT 1	LOT 1	LOT 1	LOT 1	LOT 1	LOT 1
PLAN 36R-1177	PLAN 36R-1177	PLAN 36R-1177	PLAN 36R-1177	PLAN 36R-1177	PLAN 36R-1177	PLAN 36R-1177
PART 1	PART 1	PART 1	PART 1	PART 1	PART 1	PART 1
PLAN 36R-13991	PLAN 36R-13991	PLAN 36R-13991	PLAN 36R-13991	PLAN 36R-13991	PLAN 36R-13991	PLAN 36R-13991
LOT 1	LOT 1	LOT 1	LOT 1	LOT 1	LOT 1	LOT 1
PLAN 36R-1177	PLAN 36R-1177	PLAN 36R-1177	PLAN 36R-1177	PLAN 36R-1177	PLAN 36R-1177	PLAN 36R-1177
PART 1	PART 1	PART 1	PART 1	PART 1	PART 1	PART 1
PLAN 36R-13991	PLAN 36R-13991	PLAN 36R-13991	PLAN			